

## 1. PRODUCT NAME

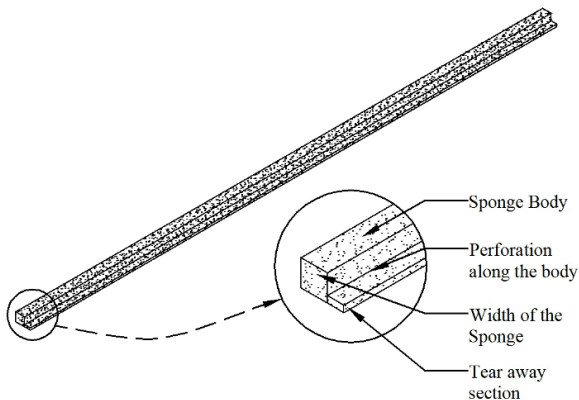
**PACC® Jamb Joint Backer FFM**  
Patent Pending

## 2. MANUFACTURER

PACC Systems, LLC  
3790 Sagebrush Lane  
Cincinnati, OH 45251  
Phone: 513-245-0444  
Fax : 513-385-3790  
Tech Support: 513-404-0977  
E-mail: [info@paccsystems.com](mailto:info@paccsystems.com)  
Web: [www.paccsystems.com](http://www.paccsystems.com)

## 3. DESCRIPTION

**PACC® Jamb Joint Backer FFM** is a friction fit and closed cell sponge used in the construction of movement and sealant joints along J-channel window and door frames that adjoin masonry veneer with a cavity of 1-inch or less. The sponge fits into and along the J-channel frame of windows or doors at the sill, jambs and head. It has a perforated tear away section that extends beyond its' main body. This tear away section is a form for the placement of mortar fill between the back of the masonry veneer and the nailing fin and along the height of the window or door jamb. The tear away section is removed after the mortar fill has been placed and is thumb print hard. The location of the perforation is aligned with the back side of the window or door frame. The resulting movement joint space will have a surface of solid masonry and the side edge of the window or door frame for adhesion. In application, the total width of the sponge is equal to the sum of; the width of the J-channel plus the width of the movement joint. The depth of the sealant joint is limited by the thickness of the J-channel flange.



## 4. LIMITATIONS

None when used for the design purpose.

## 5. MATERIALS AND COMPOSITION

**PACC® Jamb Joint Backer FFM** is a blended EPDM-neoprene closed cell sponge with a tear away section.

## 6. PHYSICAL PROPERTIES

Elongation	100%
Compression	25% 2-5 psi
Tensile Strength	90
Water Absorption	.1 maximum

Meeting the requirements for ASTM D1056

## 7. CHEMICAL RESISTANCE

Not reactive with common building materials.

## 8. TECHNICAL DATA

PACC Systems, LLC provides design data and installation instructions to architects, engineers, specifiers, and contractors.

## 9. INSTALLATION

**Storage:** Protect the material from heat, crushing, moisture, mud and construction dirt. Keep the product in the box until it will be used.

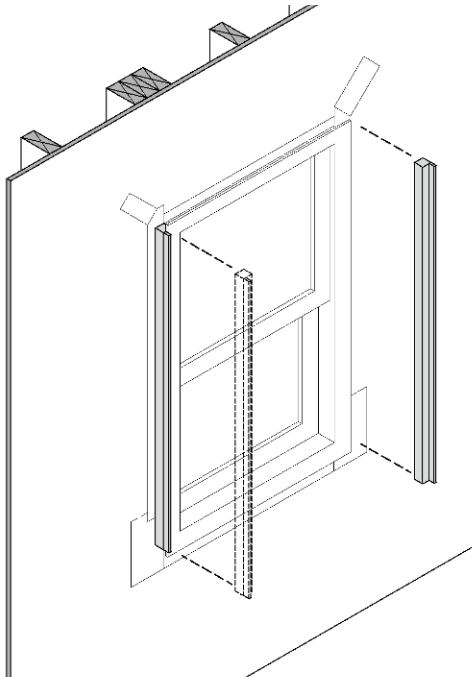
**Preparation:** Prepare the surface where the PACC® Jamb Joint FFM will be attached so that it is smooth relative to the construction surface.

**Product Attachment:** Install PACC® Jamb Joint Backer FFM prior to the installation of the masonry along the jamb.

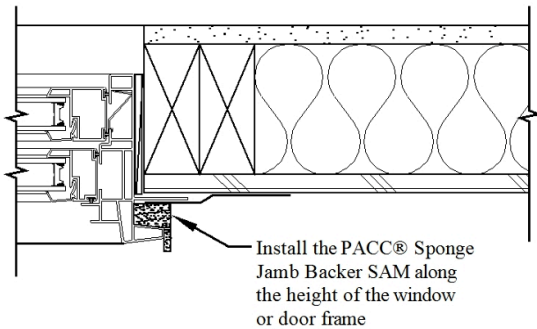
**NOTES:** The PACC® Jamb Joint Backer FFM is not flashing. Flash along the window or door jambs per the window or door manufacture specification and before installing the PACC® Jamb Joint Backer FFM.

For windows or doors that have flat sided frame construction use the **PACC® Jamb Joint Backer SAM** products.

## Installing PACC® Jamb Joint Backer FFM

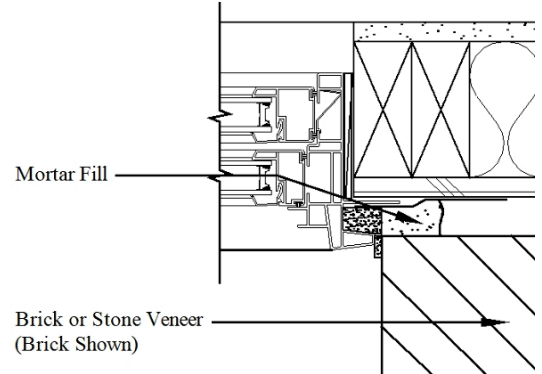


1. Cut a piece(s) of PACC® Jamb Joint Backer FFM to a length equal to the height of the window, or door jamb frame.

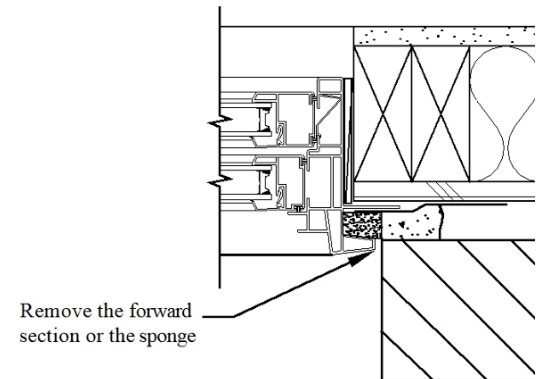


Eric update the text to PACC® Jamb Joint Backer FFM Mike replace image in Package Instructions

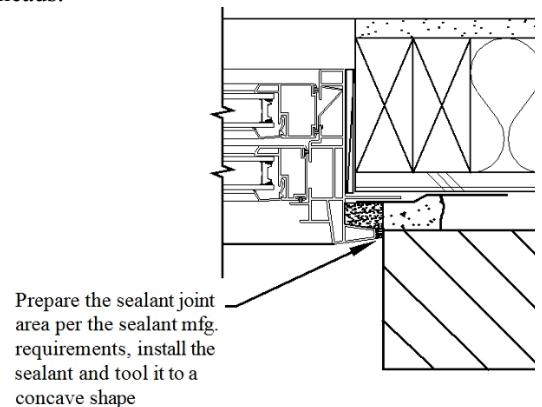
2. Insert the PACC® Jamb Joint Backer FFM into the J-channel at and along the jambs with the tear away extension flat against the edge of the window or door frame.



3. Install the masonry along and against the side of the Jamb Backer and fill the space between the back of the veneer and nailing fin with mortar. The width of the mortar fill should be about 1-inch.



4. Remove the forward section of the Jamb Backer along the perforation while the mortar is still plastic.
5. Tuck point any honey combs or voids in the mortar fill and scrape any excess mortar from the masonry heads.



6. Prepare the sealant joint area per the sealant mfg. requirements, apply the sealant, and tool it to a concave shape.

**Safety:** Material Safety Data Sheets are available by phone, e-mail, or on the web.

#### **10. AVAILABILITY AND COST**

Packaged 54 pieces 5-feet long per box.

Information about a distributor near you is available by phone or e-mail.

#### **11. GUARANTEE**

PACC® Jamb Joint Backer FFM™ will meet published specifications at the time of delivery.

#### **12. TECHNICAL SERVICES**

PACC Systems, LLC offers specialist advice to aid the architect, engineer, and contractor with the construction process.

© PACC Systems I.P. LLC 2007