

## 1. PRODUCT NAME

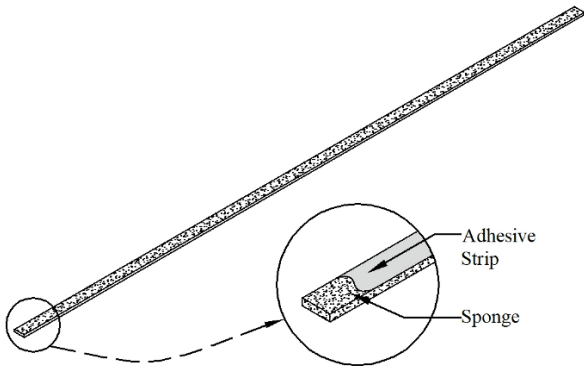
**PACC® Joint Backer SA**

## 2. MANUFACTURER

PACC Systems, LLC  
3790 Sagebrush Lane  
Cincinnati, OH 45251  
Phone: 513-245-0444  
Fax: 513-385-3790  
Tech Support: 513-404-0977  
E-mail: [info@paccsystems.com](mailto:info@paccsystems.com)  
[www.paccsystems.com](http://www.paccsystems.com)

## 3. DESCRIPTION

**PACC® Joint Backer SA** is a self adhering closed cell sponge used in the construction of movement and sealant joints around the perimeter of window and door frames that adjoin cement stucco, synthetic stone, structural thin brick and stone, and hard siding. The width of the sponge determines the width of the movement joint. The location of the forward edge of the sponge, on and along the window or door frame, determines the depth of the future sealant. For jamb frames that are 1-1/2-inches in depth or less and adjoin masonry veneer, use **PACC® Jamb Joint Backer SAM**. For windows or doors that have J-channel frame construction use the **PACC® Joint Backer FF** series material.



## 4. LIMITATIONS

None when used for the design purpose.

## 5. MATERIALS AND COMPOSITION

**PACC® Joint Backer SA** is a blended EPDM-neoprene closed cell sponge with an adhesive strip covering one side.

## 6. PHYSICAL PROPERTIES

Elongation	100%
Compression	25% 2-5 psi
Tensile Strength	90
Water Absorption	.1 maximum

Meeting the requirements for ASTM D1056

## 7. CHEMICAL RESISTANCE

Not reactive with common building materials.

## 8. TECHNICAL DATA

PACC Systems, LLC provides design data and installation instructions to architects, engineers, specifiers, and contractors.

## 9. INSTALLATION

**Storage:** Protect the material from heat, crushing, moisture, mud and construction dirt. Keep the product in the package until it will be used.

**Preparation:** Prepare the surface where the **PACC® Joint Backer SA** will be attached so that it is smooth relative to the construction surface, dry, and free of dirt.

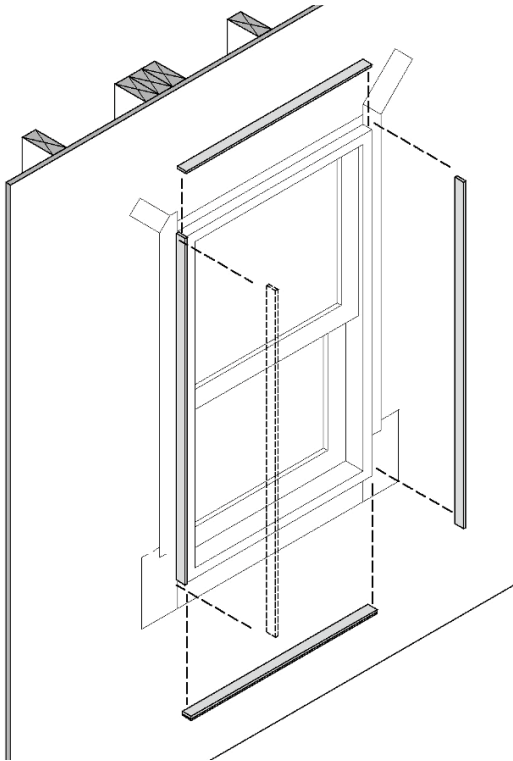
**Product Attachment:** Install the **PACC® Joint Backer SA** onto the window or door frame prior to the installation of the exterior finish.

When adhesion to the window or door frame is questionable, apply 3M Super 77 Spray Adhesive, or equal, onto the prepared surface. If that is not sufficient to hold the sponge in place then, apply 3M Super 77 onto the prepared surface and onto the exposed adhesive strip.

**NOTES:** The **PACC® Joint Backer SA** is not flashing. Flash the perimeter of the window or door manufacture specification before installing the **PACC® Joint Backer SA**.

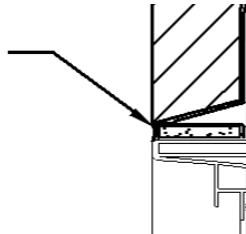
For windows or doors that have J-channel frame construction use the **PACC® Joint Backer FF** and **FFM** products.

## Installing PACC® Joint Backer SA



1. Cut pieces of PACC® Joint Backer SA to lengths that equal the dimensions of the sill, jambs, and head.
2. Remove the release paper from the adhesive strip.
3. Place the lengths along the frame with the exposed adhesive against the frame and with the forward edge positioned to meet the depth requirement of the sealant joint.
4. Apply finger pressure to adhere the sponge to the frame.
5. Install the exterior finish to the side of the sponge.

Prepare the sealant joint area per the sealant mfg. requirements, install the sealant and tool it to a concave shape



6. Prepare the sealant joint area per the sealant mfg. requirements, apply the sealant, and tool it to a concave shape.

**Safety:** Material Safety Data Sheets are available by phone, e-mail, or on the web.

## 10. AVAILABILITY AND COST

PACC® Joint Backer SA is packaged in sheathed rolls of 50 feet.

Information about a distributor near you is available by phone or e-mail.

## 11. GUARANTEE

PACC® Joint Backer SA will meet published specifications at the time of delivery.

## 12. TECHNICAL SERVICES

PACC Systems, LLC offers specialist advice to aid the architect, engineer, and contractor with the construction process.

© PACC Systems I.P. LLC 2007