

## 1. PRODUCT NAME

**PACC® Multi-Perf Joint Backer™**  
Patent pending

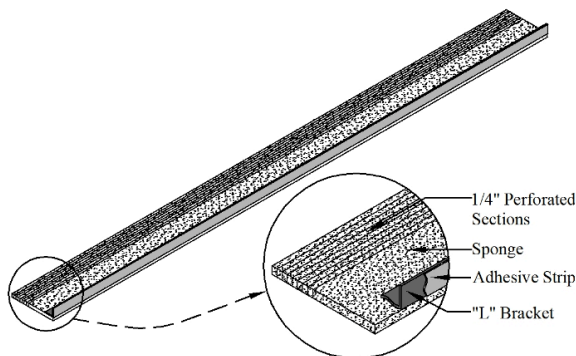
## 2. MANUFACTURER

PACC Systems, LLC  
3790 Sagebrush Lane  
Cincinnati, OH 45251  
Phone: 513-245-0444  
Fax : 513-385-3790  
Tech Support: 513-404-0977  
E-mail: [info@paccsystems.com](mailto:info@paccsystems.com)  
Web: [www.paccsystems.com](http://www.paccsystems.com)

## 3. DESCRIPTION

**PACC® Multi-Perf Joint Backer™** is a closed cell sponge used in the construction of movement and sealant joints between masonry wall sections and in construction of sealed vertical compartments in Pressure Equalized Rain Screen Walls. The width of the sponge determines the width of the movement joint and or the thickness of the compartment wall.

The sponge has eight perforated 1/4-inch segments. The segments begin inward from the forward edge of the sponge and are parallel along the length of the sponge. Each segment can be removed individually to change the position of the forward edge of the sponge in the wall. This allows a mason to build a wall with the forward edge of the sponge at the face of the wall and further allows a sealant contractor to adjust the forward edge of the sponge to meet the depth requirement for the sealant. The end result is a fully compressible space between masonry wall sections and a uniform and clean sealant space. The Multi-Perf Joint Backer™ is attached to an L-bracket for mounting to the backing wall.



## 4. LIMITATIONS

None when used for the design purpose.

## 5. MATERIALS AND COMPOSITION

PACC® Multi-Perf Joint Backer™ is a blended EPDM-neoprene closed cell sponge. The L-bracket is plastic and has an acrylic adhesive strip.

## 6. PHYSICAL PROPERTIES

Elongation	100%
Compression	25% 2-5 psi
Tensile Strength	90
Water Absorption	.1 maximum

Meeting the requirements for ASTM D1056

## 7. CHEMICAL RESISTANCE

Not reactive with common building materials.

## 8. TECHNICAL DATA

PACC Systems, LLC provides design data and installation instructions to architects, engineers, specifiers, and contractors.

## 9. INSTALLATION

**Storage:** Protect the material from heat, crushing, moisture, mud and construction dirt. Keep the product in the box until it will be used.

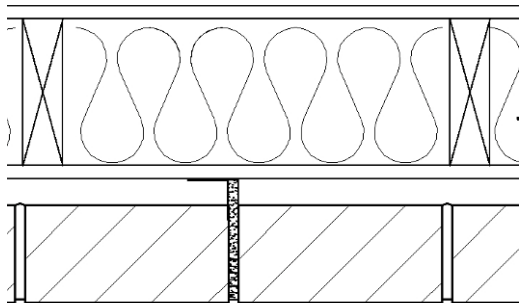
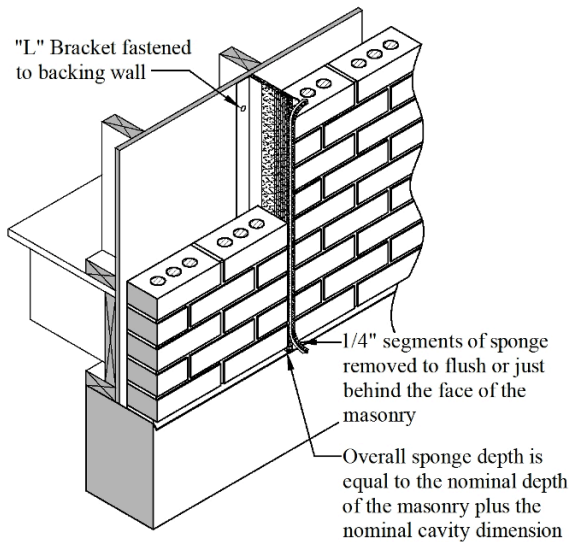
**Preparation:** Prepare the surface where the PACC® Multi-Perf Joint Backer™ will be attached so that it is smooth relative to the construction surface, dry, and free of dirt.

### Product Attachment:

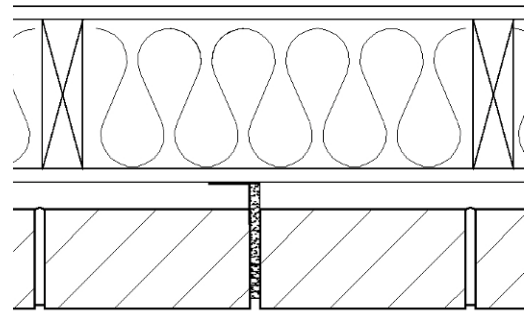
Install the PACC® Multi-Perf Joint Backer™ onto the backing wall before placing the masonry at the movement joint.

When adhesion to the backing wall is questionable, or when adhesion is required for vertical compartmentalization of the wall, apply 3M Super 77 Spray Adhesive, or equal, onto the prepared surface. If that is not sufficient to hold the L-bracket in place or if the application is for vertical compartmentalization of the wall then, install fasteners, suitable for the substrate, through the L-bracket: one fastener 3-inches in from each end and one fastener in the middle.

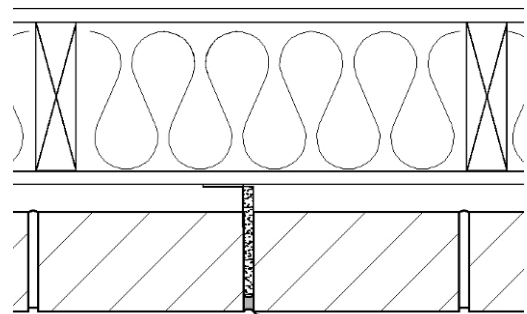
## Installing PACC® Multi-Perf Joint Backer™



1. Remove the release paper from the adhesive strip on the L-bracket.
2. Adhere the L-bracket onto the backing wall at the specified movement joint location.
3. Apply finger pressure to adhere the L-bracket to the backing wall. Use fasteners when applicable.
4. Mason instruction Steps 4 and 5: Remove segments of the sponge so that the forward edge of the remaining sponge is at the face of or, slightly behind the face of where the masonry will be.
5. Install the masonry to touch the sides of the sponge. Do not compress the sponge with the masonry. Remove any mortar that protrudes into the space forward of the sponge edge.



6. Sealant contractor instruction Steps 6 and 7: Remove sponge segments as need to establish the depth of the sealant.



Sealant

7. Prepare the sealant joint area per the sealant mfg. requirements, apply the sealant, and tool it to a concave shape.

**Safety:** Material Safety Data Sheets are available by phone, e-mail, or from the website.

## 10. AVAILABILITY AND COST

### PACC® Multi-Perf Joint Backer™

Stock widths are:  $\frac{3}{8}$ ,  $\frac{1}{2}$ , and  $\frac{3}{4}$ -inches.

Stock depths are: 3, 4, 5, 6, 8, 10, and 12-inches.

Custom width, depth, and perforation locations are available.

Information about a distributor near you is available by phone or e-mail.

## 11. GUARANTEE

PACC® Sponge Backer Multi-Perf™ will meet published specifications at the time of delivery.

## 12. TECHNICAL SERVICES

PACC Systems, LLC offers specialist advice to aid the architect, engineer, and contractor with the construction process.