

1. PRODUCT NAME

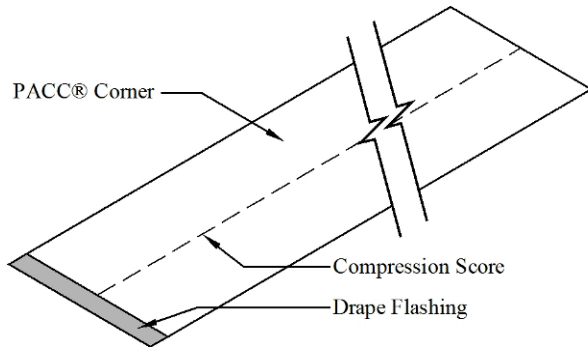
PACC® Corner

2. MANUFACTURER

PACC Systems, LLC
3790 Sagebrush Lane
Cincinnati, OH 45251
Phone: 513-245-0444
Fax: 513-385-3790
Tech Support: 513-404-0977
E-mail: info@paccsystems.com
Web: www.paccsystems.com

3. DESCRIPTION

PACC® Corner is a 2mm polypropylene cell board designed to manage above grade bulk water at wall intersections in exterior wall assemblies. It is compression scored along the center of its 16-inch width for bending to meet any angle of wall intersection. The resulting wall coverage is 8-inches per leg. It has an adhesive backed drape flashing along the bottom edge that covers the top of a section below.



4. LIMITATIONS

None when used for the design purpose.

5. MATERIALS AND COMPOSITION

The material is a polypropylene cell board with UV inhibitors.

6. PHYSICAL PROPERTIES

Polypropylene cell board

Thickness	2mm	85mil
Water Absorption		0.01%

Moisture Vapor Transmission
35.6 cc-mil/100 in²-24hr-atm

Reinforced and modified asphalt drape flashing

Thickness	60mil
Water Vapor Transmission ASTM-E-96 B US Perms	<.02
Peel Adhesion ASTM D 1000	>5.0 lbs.in.width
Elongation-Ultimate Failure of Rubberized Asphalt	> 500%

Low Temperature Pliability
ASTM D 146 Modified. No cracking at -15deg. F.

7. CHEMICAL RESISTANCE

Asphalt products are not compatible in direct contact with: uncured urethane; cured or uncured silicone.

8. TECHNICAL DATA

PACC Systems, LLC provides design data and installation instructions to architects, engineers, specifiers, and contractors.

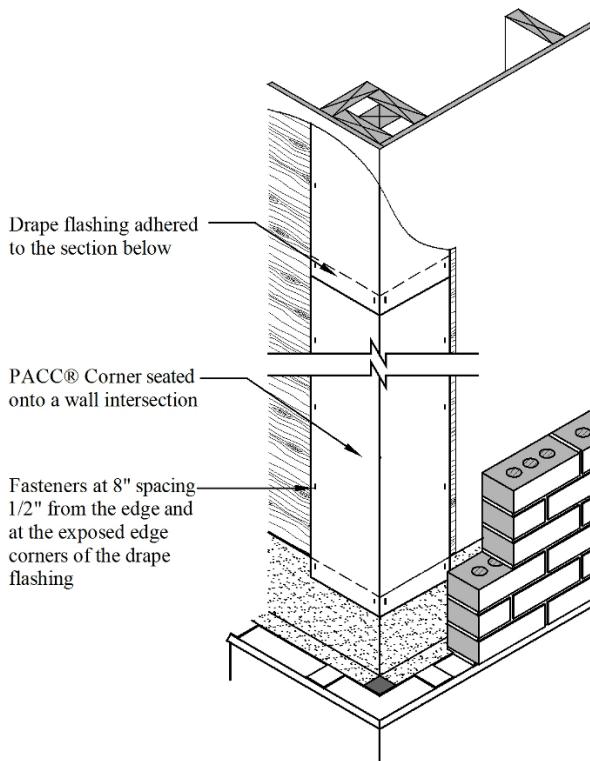
9. INSTALLATION

Storage: Protect the material from heat, crushing, moisture, mud and construction dirt. Keep the product in the box until it will be used.

Preparation: Remove irregularities from the wall backing surface that could puncture through the cell board.

Product Attachment: Affix PACC® Corners to the backing wall with fasteners suitable for the substrate. Install the fasteners at 8-inch vertical centers and ½-inch in from the outside edges.

Installing PACC® Corners



1. Bend the PACC® Corner along the compression score.
2. Seat the back side of the bend into or onto and along the point of the intersecting walls with the sides against the backing wall.
3. Fasten the PACC® Corner to the backing wall.
4. Remove the release paper from the back of the drape flashing on subsequent PACC® Corners and adhere the drape flashing onto the face of the PACC® Corner below.
5. Fasten the drape flashing at the ends of each leg.

Safety: Material Safety Data Sheets are available by phone, e-mail, or from the website.

10. AVAILABILITY AND COST

PACC® Corners are packaged 50/box.

Information about a distributor near you is available by phone or e-mail.

11. GUARANTEE

PACC® Corners will meet published specifications at the time of delivery.

12. TECHNICAL SERVICES

PACC Systems, LLC offers specialist advice to aid the architect, engineer, and contractor with the construction process.

© PACC Systems I.P. LLC 2007